

Copyboard Firmware Upgrade Procedure

Target model: Copyboard N-20S/W N-204S N-20J Captureboard C-20S/W

[Equipment]

* Copyboard main unit * PC (OS: Windows XP/Vista/7) * USB cable

[Preparation]

Download the 'Update program' from the website on the PC.

It is recommended to save in a location that facilitates operation i.e. desktop, etc.

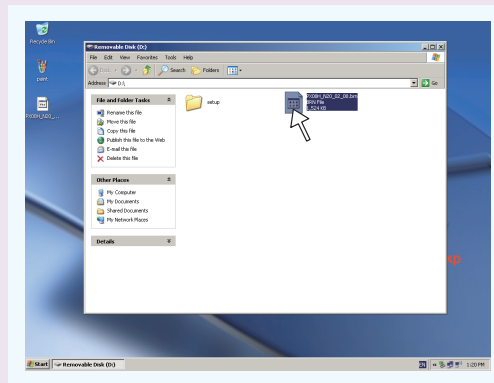
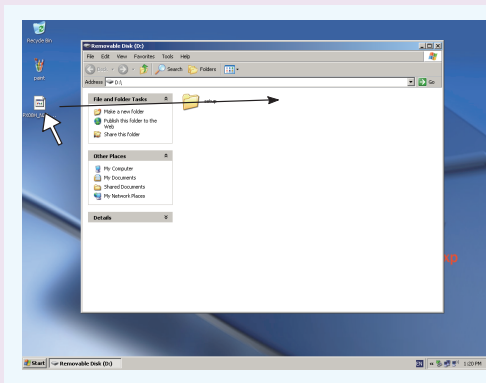
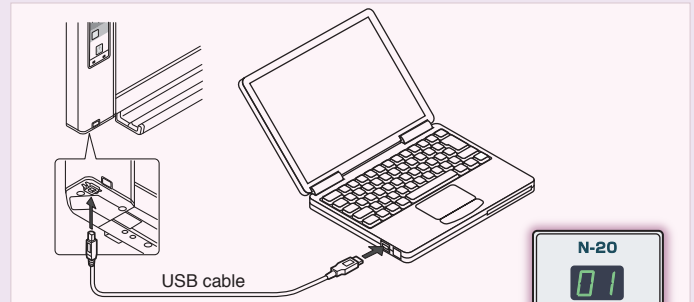
※ As the update program differs depending on the model you are using, please ensure you check the model name and then continue on to the process.

Note:

Please note that if writing data to storage is restricted due to security software, etc. this firmware update may not be possible.

[Firmware Update]

1. Power up the Copyboard.
2. Connect the PC and the Copyboard using USB cable.
3. The PC will show the Copyboard as a removable disc.
(If not recognized, open the removable disc from My Computer)
4. Copy the prepared program to the removable disc.
5. Copyboard LCD window shows blinking "UP".
6. Press SAVE of the Copyboard to start upgrade.

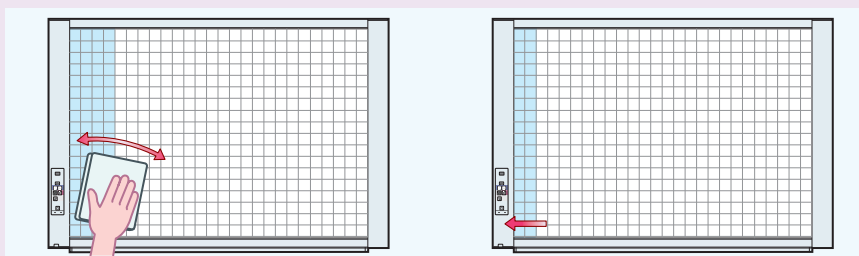


7. Wait approx. 30 sec. until "AA" appears on the LCD window.
Caution: Never turn off or unplug the AC adapter during above firmware upgrading procedure, power loss may damage the Copyboard.
8. After "AA" is confirmed, unplug the AC adapter (either primary or secondary plug) and leave the Copyboard for 1 minute and plug it again.
9. Leave the Copyboard while LED indication spins for a few minutes at most. Check the LED window shows "01" by powering up the Copyboard.
10. Check the each feature of Copyboard (scanning, printing, saving, etc) can work as expected.

[Read adjustment (white calibration)]

After writing an update program in the Copyboard is completed, perform automatic adjustment in the procedure below so as to optimize read operation. Be sure to perform this adjustment to optimize a read level.

1. Clean the sheet in an area of 20 cm wide at the left edge toward the front of the Copyboard.
2. Feed the sheet manually to the position where about half of the area cleaned in step 1 is hidden by the cover at the left edge of the Copyboard.



3. Check that the power of the Copyboard is turned on ([01] is displayed).
4. Press the (Feed/Stop) button while pressing and holding (Power).
5. Release the button and check that "CAL" scroll display ("CA"→"AL"→"L") appears.
6. [Rotation display] appears when you press (Save). Automatic adjustment is then started internally.
7. After [AA] blinking display appears, press (Power) to return to the [01] display. Operation is then completed.