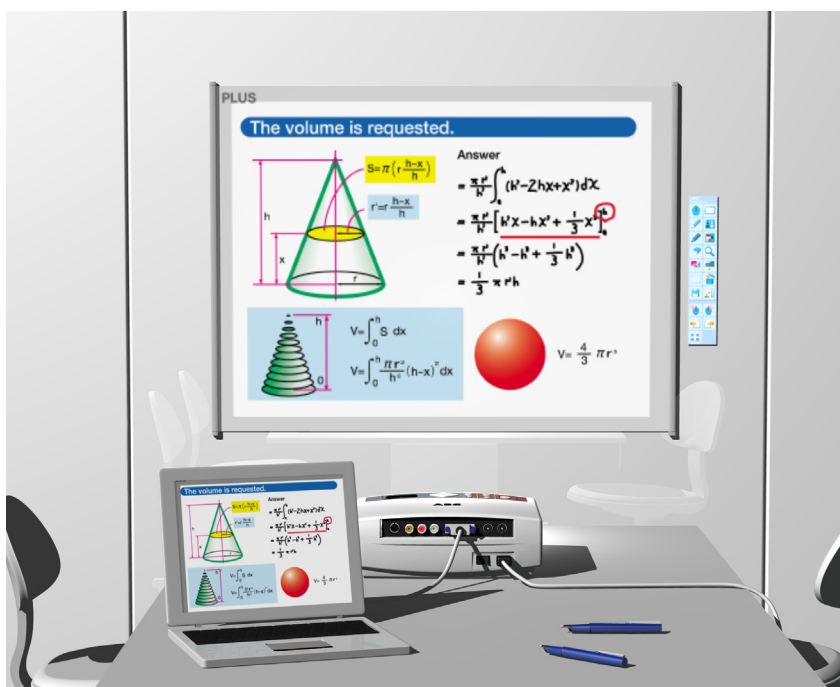


Wireless Interactive Panel UPIC-56M/UPIC-64M/UPIC-W72M

System Operating Instructions (detailed version)



We greatly appreciate your purchase of this PLUS Wireless Interactive Panel. To be sure to make the most of this product's functions, read this "System Operating Instructions (detailed version)" carefully before using the panel. After reading, store the manual in a safe place for future reference.

These System Operating Instructions are for use with the UPIC-56M, UPIC-64M, UPIC-W72M magnet type wireless interactive panels. The system consists of a digital pen, panel and software.

- The panel sizes differ for models 56, 64 and W72. The descriptions in this manual are for the UPIC-56M.

The software applications for this product are UPIC Utility and UPIC Touch&Draw, compatible with Windows Vista (32-bit) and Windows XP SP3 and later (32-bit). The software will not operate on other operating systems.

Trademarks

- Microsoft and Windows are registered trademarks or trademarks in the United States and other countries of the Microsoft Corporation of the United States.
- Adobe and Adobe Reader are trademarks of Adobe Systems Incorporated.
- Anoto® is a registered trademark of the Anoto Group AB.
- Bluetooth and the Bluetooth logo are registered trademarks of Bluetooth SIG, Inc.

Note that PLUS fully respects trademarks of corporations and products, even when not specially mentioned.

Other product and company names in this manual are registered trademarks or trademarks of the respective corporations.

- (1) Reproduction of the contents of this manual, in full or in part, is prohibited.
- (2) The contents of this manual are subject to future change without notice.
- (3) The contents of this manual have been prepared with utmost care. If, however, you should notice any dubious points, errors or omissions or you should have any comments, please contact PLUS.
- (4) Please note that PLUS will accept no responsibility whatsoever for any damages, loss of earnings or other claims resulting from the use of this product, regardless of item (3) above.

Contents

Important Safety Information.....	5
Description of the wireless interactive panel.....	8
Package contents.....	9
Part Names and Functions.....	10
Panel	10
Digital pen.....	11
Operation of the digital pen and indicator	11
Loading the battery into the digital pen	12
Replacing the stylus	12
Flow of preparations prior to using the wireless interactive panel and when quitting ...	13
Installing the wireless interactive panel.....	14
Mounting the panel	14
Putting the panel away.....	15
Installing the Software.....	16
Before installing.....	16
Operating environment.....	16
UPIC Touch&Draw operation	16
Updating UPIC Touch&Draw	16
Copyright and License	17
Installing UPIC Utility and UPIC Touch&Draw.....	18
Check before installing	18
Installing UPIC Utility and UPIC Touch&Draw	18
Uninstalling UPIC Utility and UPIC Touch&Draw	20
Pairing the digital pen and computer	21
Registering on Windows XP	21
Registering on Windows Vista.....	23
Connecting the computer and projector	25
Starting up UPIC Utility	26
Calibrating the projector	26
Changing the calibration setting	27
Starting up and quitting UPIC Touch&Draw	28
Starting up UPIC Touch&Draw	28
Quitting UPIC Touch&Draw	29

Continued on next page

UPIC Touch&Draw Part Names and Functions 30

 Projected image (computer screen).....30

 Toolbar.....31

 Drawing Shapes34

 Moving, enlarging/reducing and rotating objects35

 Editing objects36

 Zooming and Panning (moving the drawing area).....37

Outline of UPIC Touch&Draw Operations..... 38

Basic Operations of UPIC Touch&Draw 40

List of error messages..... 43

Table of digital pen indicator operations 43

Troubleshooting..... 44

 Technical support.....44

Specifications 45







Important Safety Information

Before using

Symbols Explained

Various symbols are used in this manual included with this product and on the product itself to ensure safe use of the product and to prevent injury to the user and others as well as damage to property. These symbols and their meanings are described below. Be sure to understand them fully before proceeding with your reading of the manual.

- Also read the cautions on safety in the operating instructions for the projector, computer and Bluetooth USB adapter connected to the computer, and be sure to use these products properly as well.

Meaning of symbol	Examples of symbol
 This symbol notifies of instructions urging caution (including both danger and warnings). A more concrete indicator of the type of caution is shown inside the symbol.	 Caution – risk of electric shock
 This symbol notifies of prohibited actions. A more concrete indicator of the type of prohibited action is shown inside the symbol.	 Disassembly prohibited
 This symbol notifies of actions that are restricted or instructions. A more concrete indicator of the instruction is shown inside the symbol.	 Unplug the power cord from the power outlet.

CAUTIONS

[Panel]



Keep magnetic recording media away from the panel.

The magnetic panel (models UPIC-56M, -64M and -W72M) has a magnetic sheet attached to it and magnets under the surface in the four corners. Do not allow magnetic recording media such as credit cards, transport passes, floppy disks, video tapes or cassette tapes near the panel surface or holding bars. Allowing such objects come within 10 cm could result in damage to the recorded data.



About projectors

This system uses a projector to project images. Your eyes may be exposed to the light from the projector during presentations, etc.

Be careful, as looking directly into the light from the projector could damage your eyes.



Check that the screen remains in place immediately after mounting it.

Immediately after mounting the screen, check that it does not peel off the surface of installation when you release the holding bars.



Do not touch the edges of the main unit panel.

When installing or storing the panel, be careful not to cut your hands on the edges of the panel.

Continued on next page



Do not use the included CD-ROM in a CD player for audio discs.

Never use the included CD-ROM in a CD player for audio discs. Doing so will produce loud sounds which could injure your ears or damage your speakers.

Additional Cautions

[Panel]

About the place of installation

Do not install in the places described below. Doing so may warp the panel and decrease its functionality.

- Hot places exposed to direct sunlight
- Places exposed to the direct wind from air-conditioners
- Near heating appliances, heaters, etc.
- Places exposed to soot or humidity (near kitchen counters, humidifiers, etc.)

Do not scratch the panel.

Do not hit or poke the panel with sharp or hard objects. Also, do not bend the panel or roll it up with wrinkles in it. Doing so could make it impossible for the digital pen to be read and result in malfunctioning.

Do not clean the panel with chemicals.

Do not clean the panel using thinner, benzene, alcohol or other such chemicals. Doing so may cause discoloration or damage the panel, making it impossible for the digital pen to be read and resulting in malfunctioning.

When using markers (ink)

Be sure to use only the included exclusive markers and exclusive eraser. Using other markers or erasers or rubbing the panel directly with your hand could result in ink stains that cannot be removed. Always store the markers horizontally. If markers are not stored horizontally, it may be difficult to erase the ink.

Do not leave any markings made on the panel using the exclusive markers for a long period of time.

Doing so may make it difficult to erase the ink.

Do not apply adhesive tape, etc., to the panel.

Doing so could make it impossible for the digital pen to be read and result in malfunctioning.

[Others]

Do not use a Bluetooth USB adapter on a USB hub.

Operation is not guaranteed when a USB hub is used on the computer.

Handling the CD-ROM

Do not touch the surface with no label printed on it (the surface on which data is recorded). If the surface on which the data is recorded is dirty, the data cannot be read off the disc properly. Also, do not paste any paper, stickers, etc., onto the CD-ROM.

Do not leave in places exposed to direct sunlight or near heating appliances for extended periods of time, and do not drop or bend. Doing so could warp the CD-ROM, making it impossible to read its data.

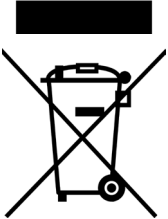
LED RADIATION
DO NOT VIEW DIRECTLY
WITH OPTICAL INSTRUMENTS
CLASS I LED PRODUCT

Disposal of Waste Equipment by Users in Private Household in the European Union

(Applicable in the European Union and other European countries with collection systems)



This symbol on the product or on its packing indicates that this product should not be treated as household waste. Instead it should be delivered to the applicable collection point for the recycling of electrical and electronic equipment. By ensuring this product is disposed of correctly, you will help prevent potential negative consequences for the environment and human health, which could otherwise be caused by inappropriate waste handling of this product. The recycling of materials will help to conserve natural resources. For more detailed information about recycling of this product, please contact your local city office, your household waste disposal service or the shop where you purchased the product.



Note: This symbol mark is for EU countries only.

This symbol mark is according to the directive 2006/66/EC Article 20 Information for end-users and Annex II.

This symbol means that batteries and accumulators, at their end-of-life, should be disposed of separately from your household waste.

Cleaning

Dots for detecting the coordinates are printed on the panel. If the panel surface is dirty, it may not be possible for the digital pen to be read and malfunction could occur.

Perform the cleaning operations below periodically.

Cleaning of the panel

Clean the surface of the panel with the panel mounted on the board (wall) surface. Attempting to clean the surface of the panel with the panel placed on the floor could cause dirt or dust from the floor to get stuck on the magnetic layer on the panel's back surface, decreasing the adhesive strength against the surface of installation and causing the panel to fall off.

If the panel is dirty, wipe it off with a damp, thoroughly wrung out cloth. After cleaning, wait until the panel has dried completely before using.

Do not use heavily soiled erasers, moist wipes, office cleaners, neutral detergents, etc.

When cleaning the back surface of magnet type panels, remove the dirt or dust gradually, rolling the panel up on the holding bar as you go. When rolling up the panel, be careful not to wrinkle or crimp it.

About the eraser

If the eraser's erasing surface is dirty, purchase a new eraser.

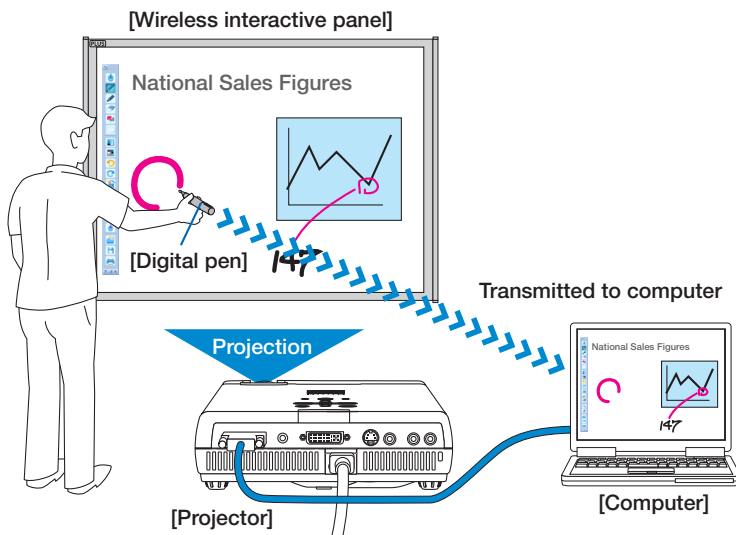
Using a dirty eraser could result in getting dirt on the panel that is hard to get off.

Description of the wireless interactive panel

A computer and projector are required to use the wireless interactive panel.

A wireless interactive panel is a system using a computer, projector and the ADP-301 digital pen*1 as the writing tool, allowing users to write and draw on a panel electronically just as if they were actually writing and drawing on the panel. The wireless interactive panel can be used for effective presentations during conferences, speeches and educational events.

*1 "ADP-301 digital pen" hereafter referred to simply as "digital pen".



Input/output, image processing, storing and printing are performed on the computer. The words and figures drawn on the panel are transferred to the computer in real time using Bluetooth wireless technology built into the digital pen, then re-projected onto the panel from a projector serving as the display device.

Thus, it appears that the user is actually writing directly on the panel.

- It is possible to save the image from the computer projected onto the panel (the background) combined with the words and figures drawn on the panel as well as pasted images, or, by switching to the white screen mode, the image can be saved without the background. This makes it easy to reuse and distributed the saved data.

- The panel can be used as a regular whiteboard using the included markers (ink).^{*2}

^{*2} Words and figures drawn with the markers (ink) cannot be saved on the computer or projected. Erase them using the included eraser.

- A separately sold Movable Tool Bar offering additional buttons is available for the Wireless Interactive Panel. Using the Movable Tool Bar makes it possible to perform operations even when the UPIC Touch&Draw toolbar is minimized.
- Separately sold digital pens can be added, so that digital pens can be used alternately. Different line colors and thicknesses can be set for the different digital pens.

Package contents

- **Panel: 1 unit**

A sheet-type panel with coordinates printed on it. Magnet type panels (M) can be rolled up for storage or carrying.

- **Digital pen (model DP-301): 1 set**

(Including 1 spare stylus and 1 AAA alkaline battery)

This pen is used to write words and figures on the panel and to operate the computer wirelessly using UPIC Touch&Draw*.

* In this manual, the wireless interactive panel's software application is referred to as either "UPIC Touch&Draw" or "the software".

- **Exclusive markers (black and red: 1 each)**

The exclusive markers (ink) can be used to draw directly on the panel, when using the system as a whiteboard.

- **Exclusive Eraser: 1**

This is used to erase words and figures drawn directly on the whiteboard using the exclusive markers (ink).

- **Exclusive carrying case: 1**

This case can be used for storing and carrying the main unit panel and accessories.

* Always store the main unit panel in its paper tube (sleeve).

- **Documents**

- **System Operating Instructions (simple version): 1**

This manual includes information on points to be heeded to ensure safe use as well as basic descriptions of the system's main operations.

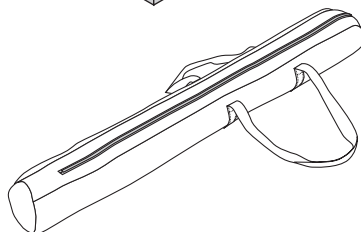
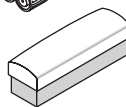
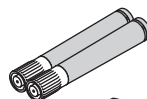
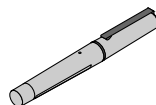
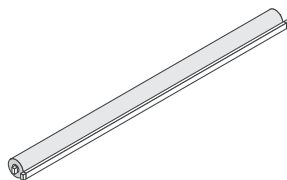
It also includes instructions for installing the system and for installing the "UPIC Utility" driver for the digital pen as well as the UPIC Touch&Draw software stored on the included CD-ROM.

- **Digital pen operating instructions: 1**

This includes instructions to be heeded to ensure safe use.

- **CD-ROM: 1**

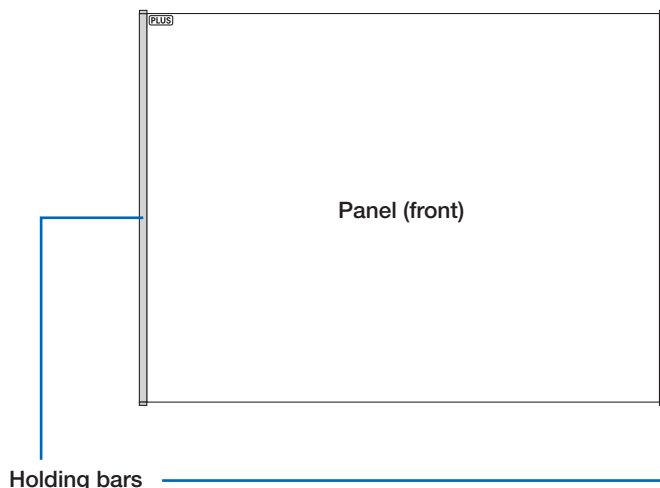
This includes UPIC Utility, UPIC Touch&Draw and the System Operating Instructions (detailed version) (in PDF format).



Part Names and Functions

Panel

A panel on which coordinates are printed in dot pattern. It is written on using the digital pen. The panel is also used as the screen on which images are projected.



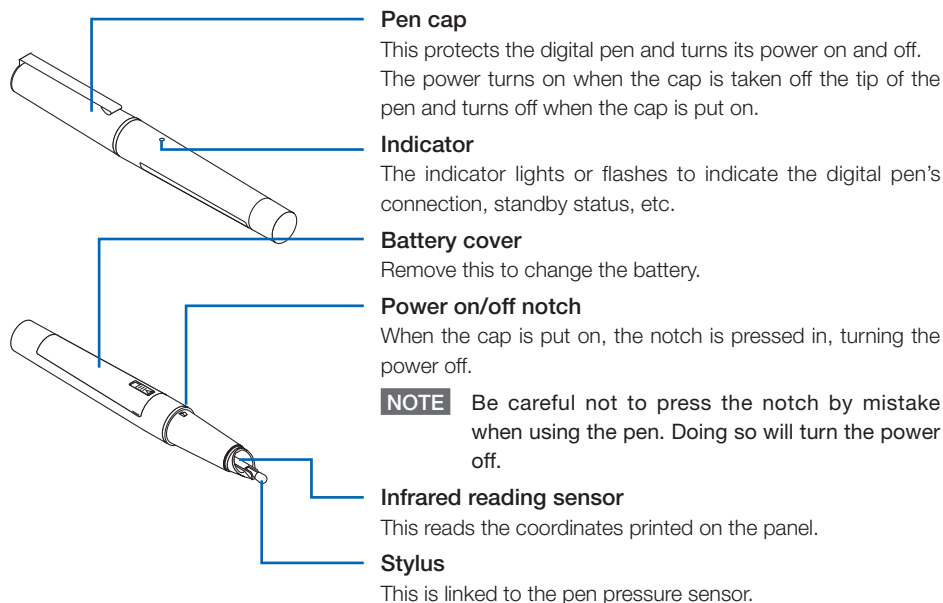
Panel (back)

The entire back surface has a magnetic sheet structure, allowing the panel to be mounted on commercially available whiteboards (in steel) and steel panels with smooth, flat surfaces.

* A "flat panel" refers to a panel with a flat, smooth surface.

Digital pen

This is the writing tool for drawing on the panel. When drawing on the panel, the position and pen pressure information is transmitted wirelessly to the computer in real time.



• Operation of the digital pen and indicator

When using for the first time, you must pair the computer and digital pen.

* Pairing refers to establishing the wireless connection between the computer and digital pen.

See "Pairing the digital pen and computer" on page 21.

1. When the cap is removed, the digital pen's power turns on (the indicator flashes) and connection to the computer begins.
2. Once the connection is completed, the indicator turns off and the pen input standby mode is set. In this mode, the digital pen can be used to draw and click.
3. When the cap is put on, the power turns off.

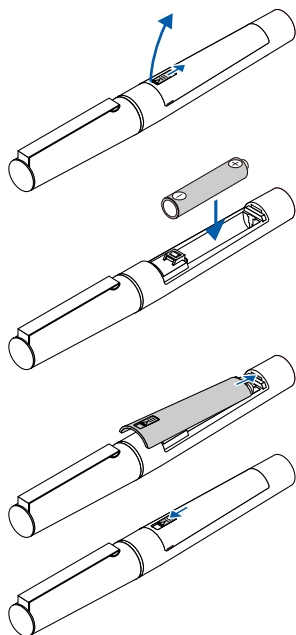
NOTICE

Check that the digital pen is properly registered on the computer, that the digital pen is not too far from the computer (within 10 meters), and that the digital pen's battery is not worn out (the pen's indicator flashes slowly). If the battery is worn out, the software's icon in the computer's task tray changes. Check the battery power on the display that appears when the icon is clicked.

Cautions on Use

- Do not place the digital pen at an excessively strong angle when drawing, or it will not be able to properly read the coordinates.
- Do not leave the digital pen's cap off. Doing so will wear down the battery.
- Do not try to use the digital pen with the stylus removed. The pen will not operate unless the stylus is mounted.

Loading the battery into the digital pen



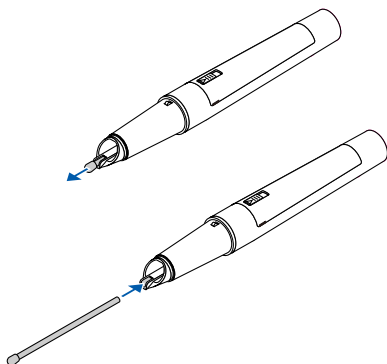
1. Slide the cover lock downwards to unlock the cover. Open the battery cover.
2. Remove the old battery, then insert the new battery in the proper direction, lining up the + side with the indication in the “battery case”.
3. Insert the hook on the cover in the groove in the “battery case”, close the battery cover, then slide the cover lock upwards to lock the cover.

NOTICE

When replacing the battery, use a commercially available AAA alkaline battery.

Replacing the stylus

If the stylus should wear down or get bent, replace it with the included spare stylus.



1. Grasp the stylus (the round pen tip) and pull it straight off.
2. Insert the new included spare stylus straight onto the pen tip until it stops.

NOTE

When using a severely worn stylus, it may not be possible to read the coordinates properly.

Flow of preparations prior to using the wireless interactive panel and when quitting

NOTICE

When using a computer on which steps 1 and 2 have been completed, start the preparations from step 3.

1 Install on the computer UPIC Utility and UPIC Touch&Draw from the included CD-ROM. (See page 18.)

2 Make the computer recognize the digital pen (pairing). (See page 21.)

- * A commercially available Bluetooth USB adapter is required if the computer is not equipped with the Bluetooth function.
- * When using multiple digital pens, pair all the digital pens with the computer.

3 Install the wireless interactive panel. (See page 14.)

4 Connect the computer and projector. (See page 25.)

5 Calibrate the positions of the computer and projector. (See page 26.)
The wireless interactive panel can now be used.

6 Start up the software. (See page 28.)
On the computer, select [Start] → [All Programs] → [UPIC] → [UPIC Touch&Draw] to start up the software.

• Once you are finished using the wireless interactive panel

1. Close the software. (See page 29.)
2. Put the cap on the digital pen.
The digital pen's power turns off.
3. Shut down the computer.
4. Turn off the projector's power.

• Moving and storing

1. Disconnect the computer and projector.
2. Put away the wireless interactive panel. (See page 15.)

Installing the wireless interactive panel

The back surface of the wireless interactive panel (referred to simply as “the panel” below) is a magnetic layer. Mount it on a metal surface that will not yield when force is applied. Below are some examples for your reference.

- Whiteboard (in steel)
- Steel wall or steel panel

Mounting the panel

This description is for mounting the panel on a whiteboard (in steel).

For proper mounting, this procedure should be performed by two people.

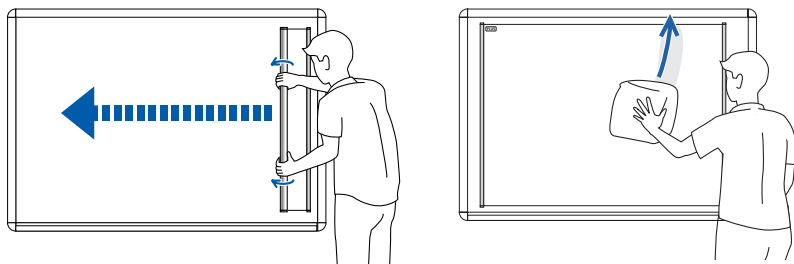
1 Clean the surface of installation.

Before mounting, wipe clean the surface on which the panel is to be mounted. Any dirt, pieces of cellophane tape, etc., will cause the panel surface to be uneven. If you wipe the surface with a damp cloth, wait until it dries.

2 Attach the panel flatly against the surface of installation.

With the panel still rolled up, line it up carefully.

Now, unwind the holding bar to the left or right, attaching the panel flatly to the mounting surface (making sure no air remains between it and the surface of installation) as you go. If after mounting any air is still trapped, eliminate it by wiping the panel gently with a piece of cloth, etc.



NOTE

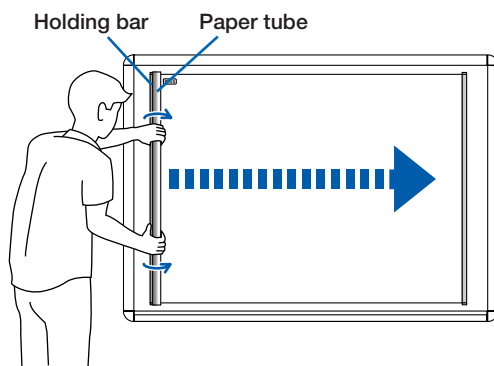
- Check that the panel is securely mounted and does not come off.
- To reattach it, first wind it up onto the holding bar, then start over.

Putting the panel away

Carefully clean the panel's surface before putting the panel away. If this is not done, dust or dirt could get on the panel's back surface when the panel is rolled up, reducing magnetic effect.

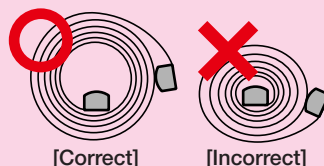
1 Roll up the panel.

Roll the holding bar onto the paper tube used in the package, then roll up carefully, pressing the holding bar against the board surface and being careful that there is no looseness in the roll and that the roll does not get crooked.



NOTE

- When rolling up the panel, apply enough pressure to keep the panel from falling away from the surface on which it is mounted. If you release the panel in the middle of the rolling up process, the panel will fall.
- Do not roll too tightly. Doing so could cause creases in the panel surface or cause the panel to curl.



- Attempting to correct for crookedness by force while the panel is partially rolled up on the holding bar could damage the panel. If there is any skewing, unroll the panel completely then start over.
- Do not remove the panel from the surface upon which it is mounted with the panel unrolled. Doing so will cause the panel to crease, making it impossible for the digital pen to be read and resulting in malfunction.
- Be careful not to cut your hands when touching the edges of the panel.

Installing the Software

Before installing

• Operating environment

Item	Description
Operating system	Windows Vista (32-bit version) Windows XP (SP3 or later, 32-bit version)
Internet Explorer	Ver. 6.0 or later
Computer	Pre-installed computer on which one of the above operating systems is running
CPU	Pentium 4 processor or later
Interface	Conforming to Bluetooth 2.0 Class 2
Memory	512 MB or greater
Hard disk	200 MB or greater
Display	1024 × 768 High Color or greater
Peripherals	Bluetooth adapter CD-ROM drive, standard USB port
Compatible Bluetooth stacks	Microsoft® Bluetooth® stack Broadcom's Widcomm® Bluetooth® software stack Toshiba Bluetooth® stack BlueSoleil Bluetooth® stack

NOTE

- Providing the above operating environment does not guarantee that all operations will work.
- Not compatible with Macintosh.
- When using a computer with no built-in Bluetooth function, a free port for connecting a Bluetooth USB adapter is required.

• UPIC Touch&Draw operation

UPIC Touch&Draw and UPIC Utility are independent. Because of this, operation differs as follows depending on which applications are started up.

UPIC Utility	Pen connection status	UPIC Touch&Draw	Operation
Launched	Connected	Launched	Drawing with digital pen possible
		Not launched	Digital pen can be used as a mouse
Not launched	Not connected	Cannot be launched	Operation with digital pen not possible
	Connected	Cannot be launched	Operation with digital pen not possible
	Not connected	Cannot be launched	Operation with digital pen not possible

• Updating UPIC Touch&Draw

See the PLUS website.

Copyright and License

• Copyright

PLUS Corporation (hereafter called We) holds the copyright of this software and related works which are protected by Japan's Copyright Law and international treaties.

Copyright © Since 2009 PLUS Corporation All rights reserved.

• Disclaimer

We shall not be responsible in any way for direct or indirect damages that may arise from this software or products derived from related software. We shall not be responsible in any way for damages as a result of the machine or medium. Furthermore, We shall not be responsible in any way that may relate to the effects of the results of using this software.

• Terms of Use and Terms of Distribution

- We shall not be responsible in any way for any kind of damages arising from the use or inoperability of this software.
- We shall not be liable in any way for support of this software, any kind of warranty, correction of trouble or continuation of version upgrades, etc.
- Provided that you consent to the aforementioned matters, you shall be permitted to use the software for non-profit purposes for personal use and use within a company.
- When "this software" is mentioned, it refers not only to the executable file, but to all of the component files including Help and appended text.

• Support

We call support the provision of all kinds of information including answers to questions, requests, trouble reports, and other matters, and the scope of our support shall be limited to the functions and operation of this software.

Problems that arise in using this software may be attributed to one of many causes, including the personal computer, the OS, other application software, and other peripheral devices. Accordingly, we only support problems that are attributable to this software. Also, this software is subject to version upgrades without prior notice due to the technical advancement of hardware and software. The customer can receive and use upgraded versions of this software through a method determined by us. Note that version upgrades will be limited to customers who consent to the aforementioned conditions of use.

- * Upon downloading this software from the PLUS Corporation Web site, or installing it from the CD-ROM, the customer is deemed to have consented to each of the terms.

Installing UPIC Utility and UPIC Touch&Draw

“UPIC Utility” and “UPIC Touch&Draw” are installed when “Installation of Software” is selected from the included CD-ROM's menu.

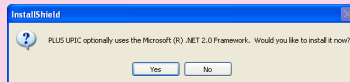
• Check before installing

1. Check that the computer being used satisfies the required operating conditions.
2. When installing, do so with the authority (account) of the computer's administrator.
3. Close any other running applications.

• Installing UPIC Utility and UPIC Touch&Draw

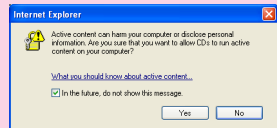
Cautions on installation

- Depending on the parameters of the computer being used, a message asking you to confirm whether or not to allow execution of active contents may appear (ex: “Allow execution of active contents?”). If so, select [Yes] to proceed.
NOTE: A security warning may appear. If so, select [Execute] and proceed to the next step.
- When the included CD-ROM is first installed on a computer running on Microsoft Windows XP, the message below may appear:



If so, be sure to select [Yes (Y)], and install “Microsoft® .NET 2.0 Framework”.

If [No (N)] is selected, the programs may not be properly installed.



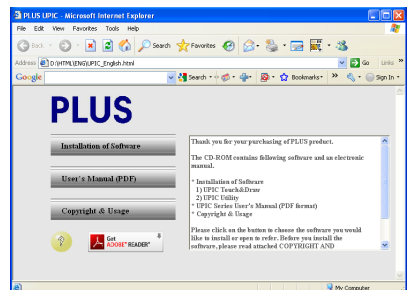
1 Insert the included CD-ROM into the computer's CD-ROM drive.

A menu screen appears automatically.

If the screen does not appear automatically, open the CD-ROM folder and double-click “Startup.exe”.

2 Click “Installation of Software”.

The installer is launched.



Continued on next page

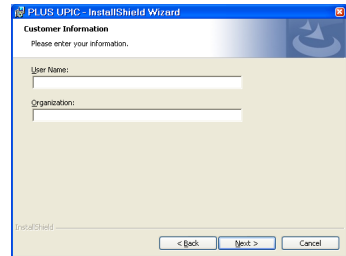
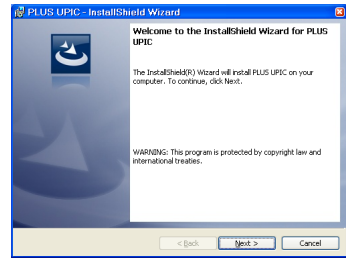
3 Follow the installer's instructions to install the software.

"UPIC Utility" and "UPIC Touch&Draw" are installed simultaneously.

- A "Customer Information" dialogue box is displayed. Check the displayed contents, then click [Next (N)] to continue installing.

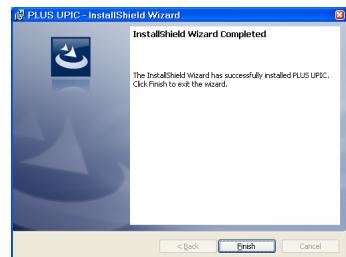
NOTICE

- * For Windows Vista, a user account control dialogue box appears. Select "Accept (A)" to continue installing.



4 Click [Finish].

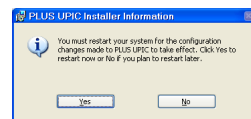
The "Installer Information" dialogue box appears.



Click [Yes (Y)] to restart the computer.

This completes installation.

Now proceed to the operation for pairing the digital pen and computer. (See page 21)



Uninstalling UPIC Utility and UPIC Touch&Draw

- 1** Click [Start] → [Control Panel] to display the control panel window.
 - Check that the digital pen's cap is attached and that its power is turned off.
 - Check that UPIC Touch&Draw is closed.
- 2** Click “Uninstall Program”.
 - * For Windows XP, the “Add/Remove Program” icon appears.
- 3** The “Uninstall/Change Program” window appears.
 - * For Windows XP, the “Add/Remove Program” icon appears.
- 4** From the list, click “PLUS UPIC”.
- 5** For Windows Vista, click [Remove]*.
For Windows XP, click [Remove].
- 6** Follow the instructions on the screen to proceed.

NOTICE

- * For Windows Vista, the user account control dialogue box appears each time the uninstaller is launched. Choose “Accept (A)” to continue uninstalling.

Pairing the digital pen and computer

The digital pen is a Bluetooth device. Signal transfer between it and the computer is not possible unless the computer has recognized the digital pen.

This section describes pairing* using the Bluetooth stack included with Windows.

* Pairing refers to the operation of connecting the digital pen and computer by wireless communication. In this manual pairing is also referred to as “connecting”.

NOTE

- Operation may be unstable when using multiple Bluetooth devices.
- When using a computer with a built-in Bluetooth function, do not use a commercially available Bluetooth adapter. If you wish to use a Bluetooth adapter, turn off the built-in Bluetooth function. For instructions on how to do so, contact the manufacturer of your computer.
- Multiple digital pens can be connected simultaneously, but depending on the environment (computer/signal status, etc.), they may not operate.

If the computer does not include a built-in Bluetooth device, use a commercially available Bluetooth USB adapter. Refer to the operating instructions of your Bluetooth USB adapter for instructions on pairing. Input “0000” as the digital pen’s path key.

NOTICE

For a description of the Bluetooth USB adapters that can be used to connect to the digital pen, see the PLUS website.

Use a Bluetooth USB adapter supporting the HID (Human Interface Device) profile.

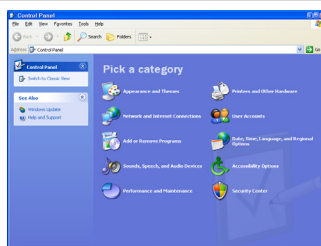
Registering on Windows XP

Preparations:

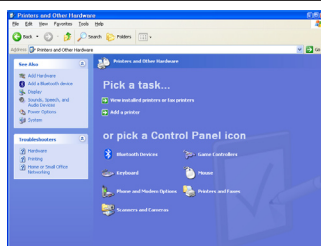
1. Turn on the Bluetooth function (the computer’s built-in function or a commercially available USB adapter).
2. **Take the digital pen’s cap off. The power turns on and the indicator lights.**

- 1 Click [Start] → [Control Panel] to open the control panel, then click [Printers and Other Hardware].

The “Printers and Other Hardware” window appears.

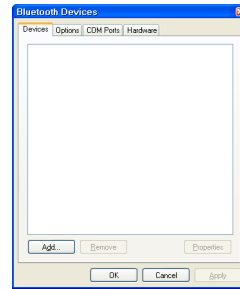


- 2 Click [Bluetooth Devices].
The “Bluetooth Devices” window appears.



Continued on next page

- 3** Click **[Add...]**.
The “Add Bluetooth Device Wizard” window appears.



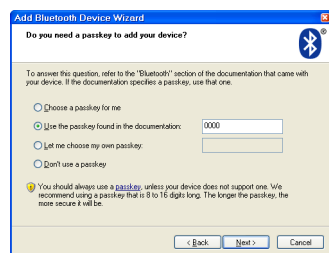
- 4** Check (click) the “My device is set up and ready to be found” checkbox, then click the **[Next (N)]** button.
The next window in the add wizard appears.



- 5** Click “ADP-301B”, then click the **[Next (N)]** button.
The next window in the add wizard appears.



- 6** Choose (click) the “Use the passkey found in the documentation (U)” radio button, input “0000” as the path key, then click the **[Next (N)]** button.
The next window in the add wizard appears.



- 7** Click the **[Finish]** button.



Continued on next page

8 Put the cap on the digital pen.

The digital pen's power turns off.

To register multiple digital pens, repeat the above procedure. When doing so, input "0000" as the path key.

Now when the digital pen's cap is removed, the digital pen automatically connects to the computer and the pen input standby mode is set.

Registering on Windows Vista

Preparations:

1. Turn on the Bluetooth function (the computer's built-in function or a commercially available USB adapter).
2. **Take the digital pen's cap off. The power turns on and the indicator lights.**

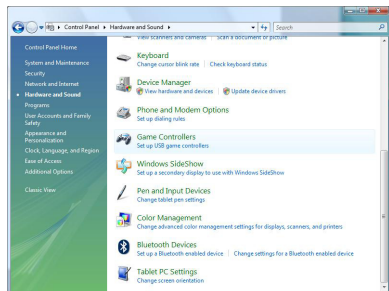
1 Click [Start] → [Control Panel] to open the control panel, then click [Hardware and Sound].

The "Hardware and Sound" window appears.



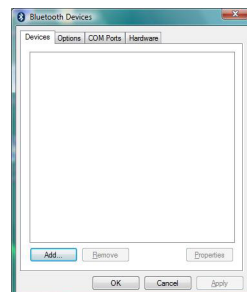
2 Click [Bluetooth Devices].

The "Bluetooth Devices" window appears.



3 Click [Add...].

The "Add Bluetooth Device Wizard" window appears.

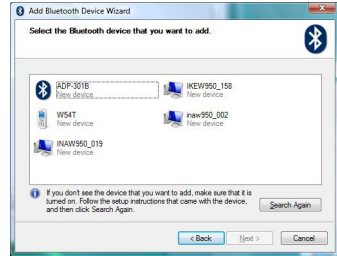


Continued on next page

- 4** Check (click) the “My device is set up and ready to be found” checkbox, then click the [Next (N)] button.
The next window in the add wizard appears.



- 5** Click “ADP-301B”, then click the [Next (N)] button.
The next window in the add wizard appears.



- 6** Choose (click) the “Use the passkey found in the documentation (U)” radio button, input “0000” as the path key, then click the [Next (N)] button.
The next window in the add wizard appears.



- 7** Click the [Finish] button.



- 8** Put the cap on the digital pen.
The digital pen's power turns off.

To register multiple digital pens, repeat the above procedure. When doing so, input “0000” as the path key.

Now when the digital pen's cap is removed, the digital pen automatically connects to the computer and the pen input standby mode is set.

Connecting the computer and projector

In order to use this system, a computer and projector must be connected.

1. Install the projector in the target position.

For cautions related to installing the projector, see the projector's operating instructions.
Check that the projector's power is turned off.

2. Use a computer signal cable to connect the computer's monitor terminal to the projector's computer input terminal.

Check that the computer's power is turned off.

3. Turn on the projector's power and start up the computer.

After a certain amount of time (about 30 seconds, though this depends on the projector), the computer's screen is projected from the projector.

- Check that the projector's input selection is set to the connected computer.
- If the screen of a notebook computer is not projected from the projector or if the notebook computer's screen is off, change the computer's external output setting.

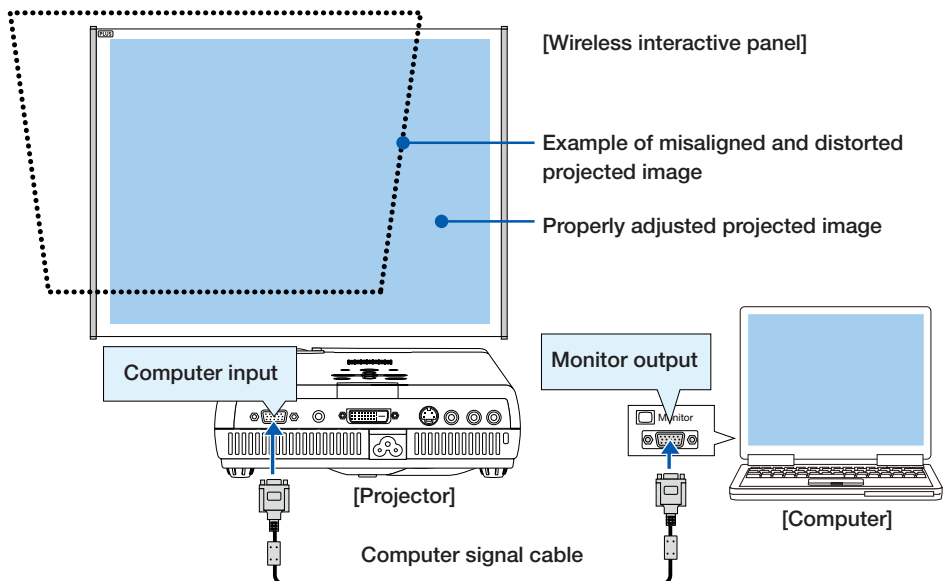
In Windows, this is normally done by pressing one of keys [F1] to [F12] while pressing in the function key ([Fn]). Which of keys [F1] to [F12] is pressed depends on the brand of computer.

For details, see your computer's help file.

4. Adjust the position and size and for any distortion of the picture projected from the projector.

Position the projector so that the picture fits on the wireless interactive panel. If the picture is distorted, use the projector's trapezoidal (keystone) correction function (vertical/horizontal correction) to adjust for a normal picture.

- UPIC Touch&Draw includes a function for calibrating the positions of the panel and the projected image. If the projected image is distorted, calibration may not be performed properly.




Starting up UPIC Utility

Calibrating the projector

Before starting up UPIC Touch&Draw, calibrate the positions of the computer and projector (UPIC Utility). Calibration patterns are displayed automatically when the computer detects the connection with the digital pen.

To change the connection detection method, see “Changing the calibration setting” on page 27.

Check:

1. Check that the projector and computer are connected and that the computer's screen is being projected on the screen. (See page 25.)
2. Check that the UPIC Utility icon  is displayed in the Windows task tray. If not, using the mouse, click [Start] → [All Programs] → [UPIC] → [UPIC Utility] to display the UPIC Utility icon (to launch UPIC Utility).

NOTE

- Calibrate the position of the picture projected from the projector so that it fits on the wireless interactive panel.
- Select the connected computer as the projector's input.

- **The digital pen's power turns off automatically if the pen is not used for about 7 minutes with the cap off. To use it after this has happened, first put the cap onto the digital pen, then take it back off.**

1 Take off the digital pen's cap.

The digital pen's indicator flashes. If the indicator remains lit without flashing, the pen is not paired (connected) with the computer. (See page 21.)

When the computer detects the connection to the digital pen, calibration patterns are displayed on the wireless interactive panel and the pattern at the upper left flashes.

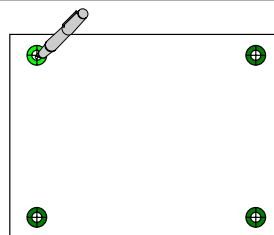
NOTE

Note that this operation is canceled if the digital pen's cap is put on.



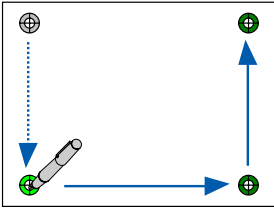
2 Calibrate the positions of the computer and projector.

Using the digital pen, touch the center of the “+” mark on the pattern that is flashing, pattern one at a time. The patterns turn off once the patterns in all four corners have been touched.



Continued on next page

- The pattern that is flashing switches in the following order as the patterns are touched:
Top left → Bottom left → Bottom right → Top right
Once a pattern has been touched, it turns gray.



This completes the calibration procedure.

Next, start up UPIC Touch&Draw. (See page 28.)

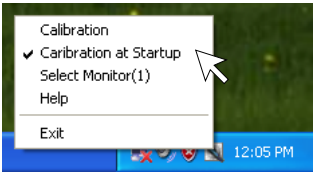
Changing the calibration setting


Change the connection detection method when the projector has been moved or the size of the projected image is changed.

- 1 With the mouse, right-click on the UPIC Utility icon in the computer's task tray. A pop-up menu appears.



- 2 Select the desired item from the menu to change the setting and calibrate.




Calibration	The calibration patterns appear if the position has not been calibrated. For instructions on calibrating, see page 26. (Default)
Calibration at Startup	When connection of the digital pen is detected, the calibration patterns appear. The operation changes by switching the calibration operation setting check button on and off. On (default): Calibration is performed each time at startup.
Select Monitor	The window for selecting the number of the monitor connected to the projector is displayed.  Select the number of the monitor connected to the projector. By default, searching is performed with the monitor number set to "Display 1".
Help	Display the UPIC Utility's help file.
Exit	Quit UPIC Utility. If UPIC Utility is quit, UPIC Touch&Draw cannot be launched.

Starting up and quitting UPIC Touch&Draw

Starting up UPIC Touch&Draw

1 Start up UPIC Touch&Draw.

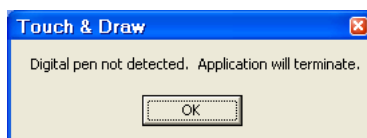
There are three ways to start up this software.

- The software can be started up by clicking [Start] → [All Programs] → [UPIC] → [UPIC Touch&Draw] on the computer.
- UPIC Touch&Draw can be started up by double-clicking the software's  icon on the Windows desktop.
- UPIC Touch&Draw can be started up by double-clicking the file saved using the software's "Save" command (extension .tad).




NOTICE

- If connection to the digital pen is not possible, the message "Digital pen not detected. Application will terminate." appears. Click [OK] to close the message. Once the digital pen is connected, start UPIC Touch&Draw back up. See "Pairing the digital pen and computer" on page 21.



Quitting UPIC Touch&Draw

1 Click “Close” on the UPIC Touch&Draw window’s toolbar.

When operating using the image projected on the panel, click  “Close” on the toolbar.



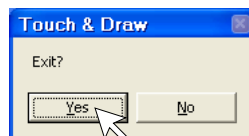
2 UPIC Touch&Draw is closed, and the “Confirm closing” message is displayed.

The message differs, depending on whether or not there is unsaved data.

If there is no unsaved data:

[Yes] Click this to quit UPIC Touch&Draw.

[No] Click this to cancel quitting.

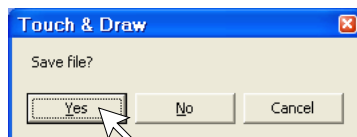


If there is data that has not yet been stored:

[Yes] When this is clicked, the Windows “Save as” window appears. UPIC Touch&Draw is closed after data storage is completed.

[No] When this is clicked, UPIC Touch&Draw is closed without storing the data.

[Cancel] Click this to cancel quitting.



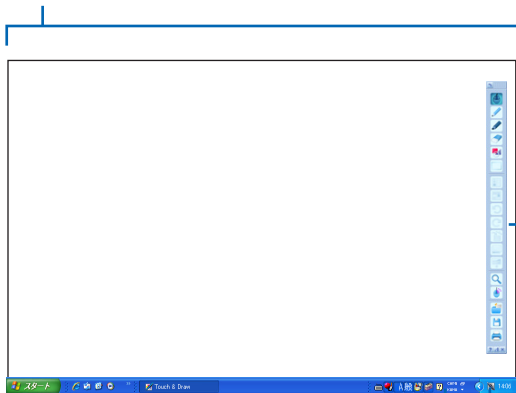
3 Put the cap on the digital pen.

UPIC Touch&Draw Part Names and Functions

Projected image (computer screen)

Drawing area

Drawings and figures made with the digital pen as well as read-in images are displayed here.



Task tray

UPIC Utility icon

When right-clicked, a pop-up menu appears.

Calibration, Calibration at Startup, Select Monitor, Exit (see page 27)

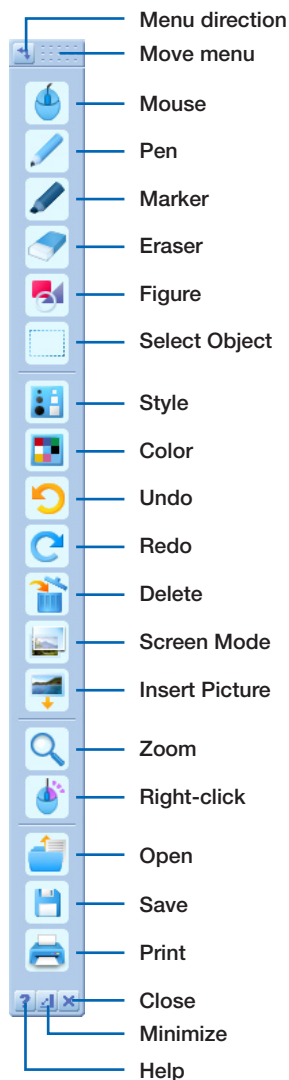
(When  is displayed):

When the icon is left-clicked, a pop-up menu indicating that the digital pen's battery power is low is displayed.

Toolbar

Use this to select and set the various functions in UPIC Touch&Draw. For details, see page 31.

The items that can be selected depend on the mode. Items that cannot be selected are displayed dimly.



Toolbar



Menu direction

The direction of the menu bar switches between horizontal and vertical each time this is clicked.



Move menu

Drag here to move the menu to the desired position.

- * Only one of the "Mouse", "Pen", "Marker", "Eraser", "Figure" and "Select Object" icons can be selected at a time. It is not possible to select multiple icons. These six functions are called input modes.



Mouse

Switches the input mode to the mouse mode.

In this mode, the computer screen projected on the panel can be operated.

- Certain buttons on the toolbar cannot be selected when in the mouse mode.
- Windows operations can only be performed when in the mouse mode.

● Mouse operations using the digital pen

Dragging: Move with the pen tip pressed in.

Clicking: Press the pen tip once.

Double-clicking: Press the pen tip twice.

Right-click: Press and hold the pen tip (until the pop-up menu appears).



Pen

Switches the input mode to the pen mode.

Set the pen thickness at "Style", the pen color at "Color".



Marker

Switches the input mode to the marker mode.

Set the marker thickness at "Style", the marker color at "Color".



Eraser

Switches the input mode to the eraser mode.

- Use this to erase part of what you have written. Drag the eraser over words and lines you have drawn with the digital pen to erase that section. To delete in units of objects, use [Delete] at "Edit Object".
- Set the eraser thickness at "Style".
- Figures and images cannot be erased.



Figure

Displays the "Figure Menu" window. (See page 34.)

Click the desired figure icon and drag the digital pen to draw the figure.

- Set the thickness of the lines at "Style", the figure color at "Color".
- To close the "Figure Menu" window, either click the "Figure" icon on the toolbar.



Select Object

Switches the input mode to the object selection mode. (See page 35.)

Click the object to select and move it, etc.



Style

Displays the "Style Menu" window. Use this to select the thickness of the tool for the currently selected input mode (pen, marker, eraser or figure).

This cannot be selected when the input mode is set to the mouse or object selection mode.



[When pen, marker or figure is selected]



[When eraser is selected]



Color

Displays the “Color Menu” window. Use this to select the color for the currently selected input mode (pen, marker or figure).

This cannot be selected when the input mode is set to the eraser, mouse or object selection mode.



NOTICE

When using multiple digital pens:

- When the software is running, the [Style] (thickness) and [Color] (color) settings can be selected separately for the different digital pens.
- When the software is running, the thickness and color set for the first digital pen recognized (one digital pen only) is stored in the memory even when the software is quit.
- When multiple digital pens are used, they can be operated alternately.
- The color is assigned automatically.
- When the input mode is changed, the change is reflected for all digital pens. This does not apply for the Pen and Marker modes, however.



Undo

Up to the last 100 drawing or editing operations can be undone in order, starting from the most recently performed operation.



Redo

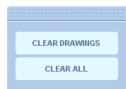
Restores the operations undone with the undo command, in order.



Delete

Displays the “Delete Menu” window. The screen turns off after the object is deleted.

* To cancel, click somewhere outside the menu. The “Delete Menu” window turns off.



CLEAR DRAWINGS: Clears letters or lines drawn with the digital pen.


CLEAR ALL: Clears everything, including images inserted with the “Insert Picture” command.

* To erase (delete) only a certain object, see the section “Editing objects” (page 36).



Screen Mode

The mode switches between “White Screen” and “Overlay Screen” each time the screen mode icon is clicked.

When in the “Overlay Screen” mode : The computer’s screen is displayed on the background. Other applications can be displayed and written on with the digital pen.

When in the “White Screen” mode : The background is a white screen with ruled lines.



Insert Picture

Displays the Windows “Open File” window. Images in the following formats can be inserted: JPEG, BMP, PNG, TIFF, GIF. (See page 38.)

- Images can be moved, enlarged/reduced or rotated (for figures and pictures).

* If the image is larger than the drawing area, it is automatically reduced, keeping the same aspect ratio.



Zoom

Sets the magnification for the screen in the drawing area.

The setting switches as follows each time the [Zoom] icon is clicked: 200% → 300% → 400% → 100% ... (See page 37.)



Right-click

When [Right-click] is clicked, operation switches to the Windows mouse right-click operation.

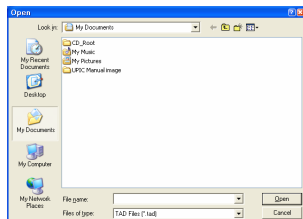
For examples of operation, see step 5 under “Editing objects” on page 36.



Open

Displays the Windows “Open File” window. Use this to open files you have created and saved with UPIC Touch&Draw (.tad files).

* Image files saved in formats other than TAD (.tad) cannot be opened with this command.



Save

Displays the Windows “Save As” window. Use this to save the drawing area data. (See page 39.)

The format for saving the data can be selected from one of the following: “.jpg” (JPEG format), “.bmp” (BMP format), “.png” (PNG format), “.tif” (TIFF format) or “.tad” (TAD format)

The file name is input automatically as follows: “[product name] + [date] + [serial number].xxx” (“xxx” being the extension for the selected file format).

* “.tad” files (in TAD format) can be opened with the “Open” command and edited with UPIC Touch&Draw. (TAD is a file format unique to UPIC Touch&Draw.)

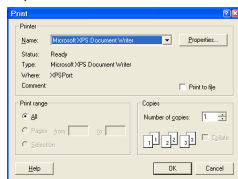
This file format can only be selected when the screen mode is set to “White Screen”.

* Files saved with the extensions “.jpg”, “.bmp”, “.png” and “.tif” can be imported into other applications as image data.



Print

Opens the Windows “Print” window.



Select the necessary items on the print window. See your Windows instructions.

- When the screen mode is set to “Overlay Screen”, an image combining the Windows screen background with the drawing area data is printed.
- When in the white screen mode, the drawing area data is printed.



Help

Displays the help menu.



Minimize

Closes the toolbar, placing the minimized icon in the task tray. Click this to display the toolbar as it was before it was minimized.



Close

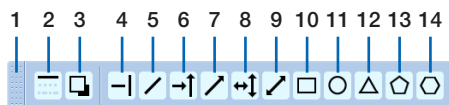
UPIC Touch&Draw is closed, and the “Confirm closing” message is displayed. (See page 29.)

Drawing Shapes

Example: Drawing a square frame with solid lines

1 Click [Figure].

The "Figure Menu" window appears.



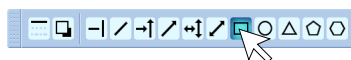
1	Move figure menu: When the toolbar is minimized, the menu can be moved by dragging here.	4	Set figure to horizontal or vertical. (Default: vertical)
2	Select line type: Click repeatedly to switch between Dotted line → Dashed-dotted line → Solid line ... (Default: Solid line)	5	Set figure to straight line.
3	Select filling: Click repeatedly to switch between Filled and Not filled. (Default: Not filled)	6	Set figure to horizontal/vertical arrow.
		7	Set figure to arrow.
		8	Set figure to horizontal/vertical 2-way arrow.
		9	Set figure to 2-way arrow.
		10	Set figure to rectangle.
		11	Set figure to circle.
		12	Set figure to equilateral triangle.
		13	Set figure to equilateral pentagon.
		14	Set figure to equilateral hexagon.

NOTICE

- When [Select line type] is clicked, the displays of the icons for line types 4 to 14 also change accordingly.
- When [Select filling] is clicked, the filling icon switches, and icons 10 to 14 switch to filled figures.

2 Click the Rectangle icon.

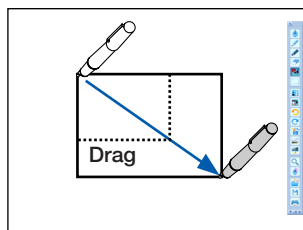
- To change the color, select the desired color at the "Color Menu" window.
- To change the thickness of the lines, select the desired thickness at the "Style Menu" window.



3 Drag the pen from the starting point to the end point.

When the pen is dragged, the figure is drawn from the starting point as a dotted line, following the movement of the pen. The figure is only entered when the pen is lifted, so you do not have to worry about going off course while dragging.

- Another figure can be selected while the "Figure Menu" window is displayed.
- The "Figure Menu" window is closed when the "Figure Menu" window or the [Figure] icon on the toolbar is clicked.
- To write letters, click the [Pen] or [Marker] icon, then write.



Moving, enlarging/reducing and rotating objects

Letters and lines drawn with the digital pen, lines and figures created with the Figure tool and inserted pictures are called “objects”.

1 Click the [Select Object] icon.

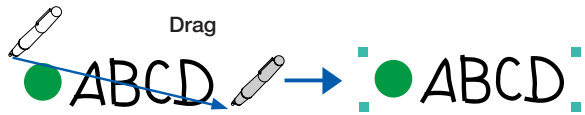
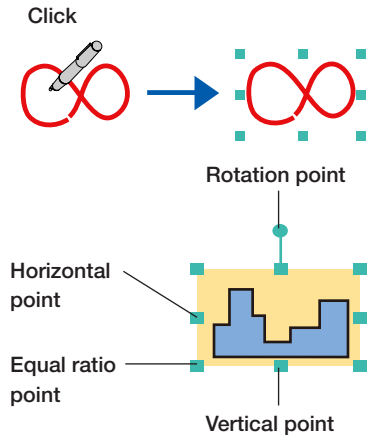
The mode for selecting objects is set.

2 Select the desired object.

When the object is clicked, a frame is displayed. Click anywhere outside the object to turn the frame off.

Horizontal point	The object is enlarged/reduced in the horizontal direction.
Vertical point	The object is enlarged/reduced in the vertical direction.
Equal ratio point	The object is enlarged/reduced at an equal ratio.
Rotation point	The object is rotated. (Figures and pictures can be rotated.)

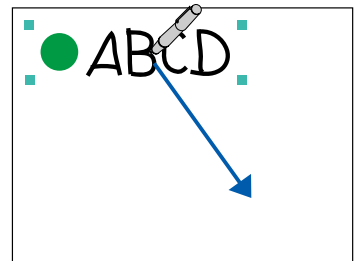
- To select multiple objects, drag the pen over the area containing the desired objects.
- Objects can only be enlarged at an equal ratio.



3 Moving objects

With the frame displayed, drag at any position within the frame (other than a point) to move the object.

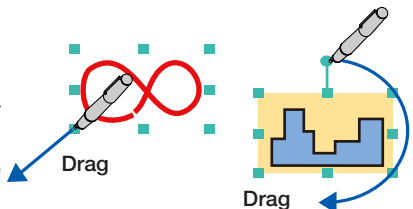
The object can be moved anywhere as long as at least one side of the object can still be selected (it cannot be moved so far that it is completely disappears from the drawing area).



4 Enlarging/reducing and rotating objects

With the frame displayed, drag the desired point. The shape of the cursor changes when the cursor is set on a point.

- When multiple objects are selected, they can be enlarged/reduced, but not rotated.



Editing objects

Objects can be deleted individually, copied and automatically copied.

Example: Copying and pasting an object

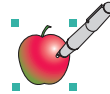
1 Click the [Select Object] icon.

The mode for selecting objects is set.

2 Select the object to be edited.


Click on the object. The frame appears.

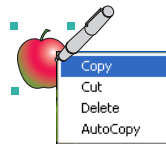
- To select multiple objects, drag the digital pen in such a way that all the objects you want to select are included.



3 Press and hold the digital pen on the object until the editing menu appears.

The editing menu appears.

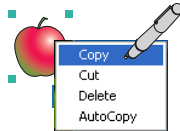
- The editing menu can also be displayed using the  [Right-click] icon on the toolbar. In this example, click on the object to display the editing menu.



4 Click [Copy].



The object is copied and the editing menu closes.

- If “AutoCopy” were to be clicked, the object would be automatically pasted at the clicked position. There would be no need to perform step 5.



5 Press and hold the digital pen at the desired position.

The copied object is pasted at that position.

- The copied object is pasted at that position if “Cut” was clicked in step 4.
- When using the  [Right-click] icon on the toolbar, the object is pasted when you click at the desired position.
- For instructions on adjusting the position, see the previous page.
- To paste the same object again, press and hold the digital pen again (or click when using the  [Right-click] icon).



Editing menu items and operations

Copy	Temporarily stores the object in the memory.
Cut	Cuts (deletes) the object. (The object is temporarily stored in the memory.)
Delete	Deletes the object. (The object is not stored in the memory.)
AutoCopy	Automatically copies & pastes the object.

* When an object is stored in the memory using the editing menu, the previously stored object is overwritten.

Zooming and Panning (moving the drawing area)

These functions allow you to magnify the screen and move the positioned that is displayed.

The screen is magnified with the clicked position as the center. The outer edge of the drawing area is adjusted to fit within the drawing area.

1 Click the [Zoom] icon to set the zoom rate.


Click once to set the mode in which the zoom rate can be selected. (By default, the zoom rate is set to 200%.)

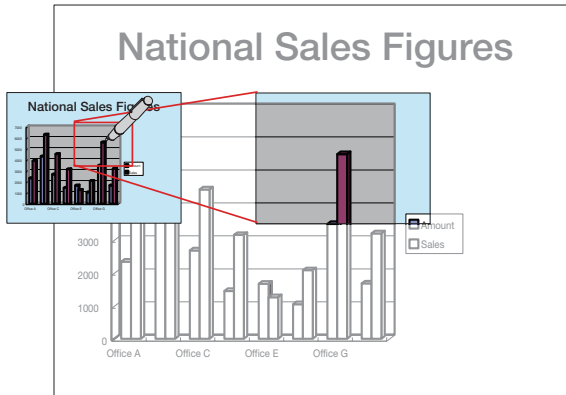
When clicked again, the setting switches in the following order: 300% → 400% → 100% → 200% ...

(The above percentages indicate the length ratio.)

2 Click on the position you want to zoom.

After several seconds, the screen is zoomed by the set magnification ratio.

- Zooming is not possible if the  [Zoom] icon is not set to the mode in which the zoom rate can be selected.
- If any other icon is clicked while zooming, zooming is canceled and the screen returns to 100% size.
- It is not possible to draw or select objects while zooming.

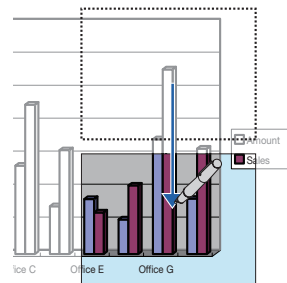


3 Move the displayed position.

Drag the drawing area to move the displayed position.

Returning to 100% size

The screen returns to 100% size when any other icon is clicked.



Outline of UPIC Touch&Draw Operations

1 Preparing documents

- When the screen mode is switched to the white screen mode, a white screen is displayed.

The digital pen can be used to write in and insert diagrams into this drawing area to conduct presentations. Prepare the diagrams to be used for the presentations in advance on your computer.

- * The formats of image files that can be inserted into the drawing area using UPIC Touch&Draw are JPEG, BMP, PNG, TIFF and GIF.
- The Windows desktop can be projected as the background by switching the screen mode to the overlay screen mode. You can also switch back to the white screen mode. By using the overlay screen mode, you can write words or insert pictures in the drawing area while projecting documents from other applications. However, because UPIC Touch&Draw uses an image of the Windows desktop as the background, the applications on the desktop cannot be operated using the UPIC Touch&Draw toolbar.

To operate the application on the background

- a) Select the mouse icon from the UPIC Touch&Draw's toolbar.
 - b) Click in the window of the application displayed on the Windows desktop to bring it to the forefront (making it operable), then operate it as desired.
- * Avoid inserting images in such a way that they cover the entire drawing area. If an image covers the entire drawing area, that image will be selected when you click in the drawing area. If this does happen, first display a different application, then return to the UPIC Touch&Draw and switch the screen mode to the overlay screen mode.

2 Take off the digital pen's cap and calibrate the positions of the computer and projector. (See page 26.)

3 Start up UPIC Touch&Draw. (See page 28.)

4 Select the "White Screen" or "Overlay Screen" icon from the toolbar.

5 Display the presentation documents using the "Insert Picture" mode.

To display a TAD file you have prepared for the presentation in advance using UPIC Touch&Draw, click "Open" and open the desired TAD file.

6 Make any additional annotations using the digital pen.

- * Select the desired pen or marker thickness and color to write words, etc.
- * Straight lines, circles, etc., can be drawn by selecting the "Figure" icon and dragging.

7 Saving

- * When “Save” is selected, the format for saving the data can be selected from one of the following: “.jpg” (JPEG format), “.bmp” (BMP format), “.png” (PNG format), “.tif” (TIFF format) or “.tad” (TAD format)
- * TAD (“.tad”) is a file format unique to UPIC Touch&Draw. Files in TAD format can be opened using the UPIC Touch&Draw’s “Open” command and edited (moving/enlarging objects, etc.).
“.tad” (the TAD format) can only be selected when the screen mode is set to the white screen mode.
- * Files saved with the extensions “.jpg”, “.bmp”, “.png” and “.tif” can be imported into other applications as image data.

8 To conduct another presentation from this point, click the “Delete” icon, and on the “Delete Menu” window click “CLEAR ALL” to delete all the data, then return to step 6.

NOTE Be sure to save any important data before deleting it.

9 Quit the software. (See page 29.)

Basic Operations of UPIC Touch&Draw

This section describes the basic operations in UPIC Touch&Draw. For details, see the explanations of the individual items.

These basic operations are performed after calibration is completed and UPIC Touch&Draw has been started up. If UPIC Touch&Draw is not started up, see “Starting up and quitting UPIC Touch&Draw” on page 28.

- The digital pen's power turns off automatically if the pen is not used for about 7 minutes with the cap off. To use it after this has happened, first put the cap onto the digital pen, then take it back off.

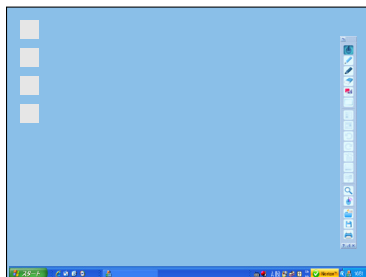
Example: Conducting a presentation in the overlay screen mode.

The operations are performed on the picture projected on the wireless interactive panel.

1 Select the [Screen Mode] icon from the toolbar.

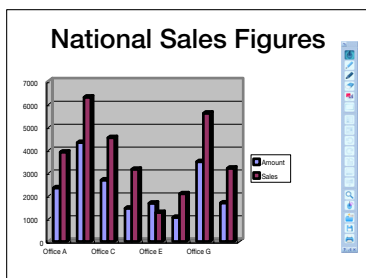
The screen mode set when UPIC Touch&Draw is started up is the [Overlay Screen] mode.

To use the white screen mode, click the [Screen Mode] icon and switch to the [White Screen] mode.



2 Operate Windows to display the presentation documents over the entire screen.

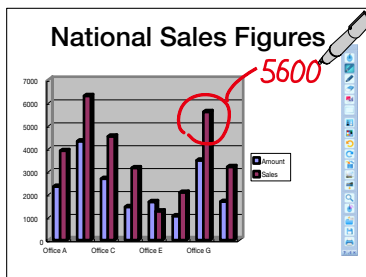
Click the [Mouse] icon on the toolbar and open the desired presentation file.



3 Use the digital pen to write words and figures.

Click the [Marker] icon on the toolbar and write with the digital pen.



To change the marker color, click the [Color] icon and select the desired color. To change the thickness of the lines, click the [Style] icon and select the desired setting.

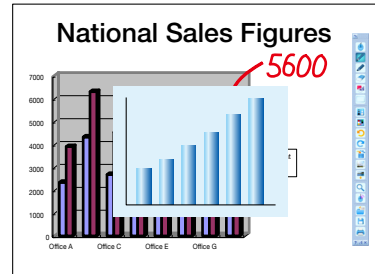
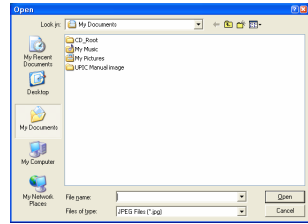


Continued on next page





4 Inserting an image.

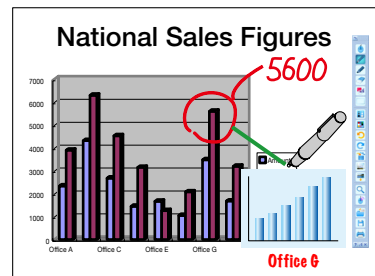
Prepare the image beforehand.

- 1) Click the  [Insert Picture] icon on the toolbar to display the "Open File" window.
- 2) Select the desired file then click [Open]. The "Open File" window closes and the image is positioned at the center of the drawing area.
- 3) When the image is clicked after clicking the  [Select Object] icon on the toolbar, a frame is displayed. Drag at any position within the frame to move the object to the desired position. For details, see page 35.




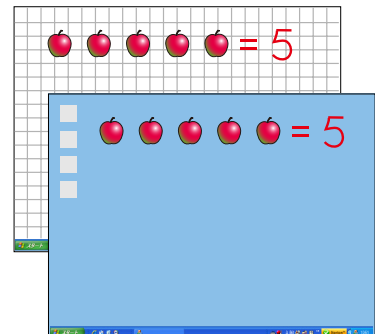
5 Drawing lines

- 1) Click the  [Figure] icon on the toolbar, then on the "Figure Menu" window click the  [Line] icon.
- 2) Now drag. A straight line is drawn with the position at which you started as the starting point.
 - To change the thickness of the line, select the desired thickness (in pixels) at  [Style].
- 3) To write freehand and draw letters, click the  [Marker] icon on the toolbar and write with the digital pen.




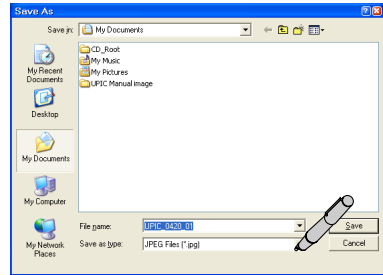
Operating Windows while using in the [White Screen] mode

- 1) Click the toolbar's  [Minimize] icon with the digital pen. The UPIC Touch&Draw icon is placed in the Windows task tray.
- 2) When another application on the Windows task tray, etc., is clicked, the mode switches to the overlay screen mode and the Windows background screen is displayed. Also, the input mode is set to the mouse mode. Windows operations can now be performed with the digital pen.
- 3) Switch back to the white screen mode. Click the UPIC Touch&Draw icon in the Windows taskbar to restore the window. Continue with the presentation.




6 Saving the screen

- 1) Click the  [Save] icon on the toolbar to display the "Save As" window.
- 2) Select "Save as type", and select the file type.
 - The TAD format (".tad") can only be selected when in the white screen mode. Files in this format can be opened with the "Open" command and edited with UPIC Touch&Draw. (TAD is a file format unique to UPIC Touch&Draw.)
 - When ".jpg", ".bmp", ".png" or ".tif" is selected, the image saved is a combination of the image in the drawing area and the Windows screen. Files in these formats can be loaded into other applications as image data.
 - The file name is input automatically as follows: "[product name] + [date] + [serial number].xxx" ("xxx" being the extension for the selected file format).
We recommend changing the file names on the computer after quitting UPIC Touch&Draw to names that are more easily recognizable.
- 3) Click "Save".

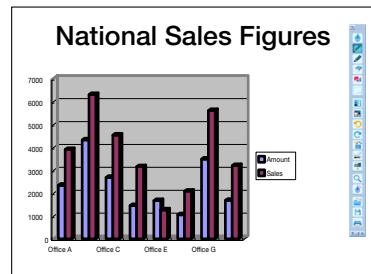


7 To conduct a new presentation at this point, first clear the drawing area.

Click the  [Delete] icon on the toolbar, then from the "Delete Menu" window click "CLEAR ALL" to delete all the data.

* To cancel without deleting, click anywhere outside the "Delete Menu" window before clicking "CLEAR ALL".

To continue, repeat operations 1 to 6.



8 Ending the presentation

See "Quitting UPIC Touch&Draw" on page 29.

List of error messages

The error messages below are displayed after UPIC Touch&Draw is closed.

Item	Description	See page ...
Memory error	There is not enough computer memory for UPIC Touch&Draw.	16
Digital pen detection error	The digital pen could not be detected.	12, 21

Item	Description	See page ...
Calibration error	<ul style="list-style-type: none"> Adjust the projector's position, then perform calibration again. Calibration has not been properly input. 	26, 27
Low digital pen battery warning	The remaining power in the digital pen's battery is low.	12, 30

Table of digital pen indicator operations

Digital pen	Indicator operation	Description
Operation when cap is removed	First lights, then turns off	Preparations for using the digital pen are completed.
	Flashing (lit for 0.5 seconds, off for 1 second)	Currently pairing, pairing is ongoing.
	Off	Digital pen is not working. <ul style="list-style-type: none"> Try putting the cap back on then taking it off again. Battery is low and digital pen can no longer be used.
	Flashing slowly (lit for 0.5 seconds, off for 5 seconds)	Battery is low. <ul style="list-style-type: none"> Replace the battery.
	Flashing quickly (lit for 0.2 seconds, off for 0.2 seconds)	An error has occurred. <ul style="list-style-type: none"> Put the cap back on, then try again.
Operation during use	Off	Digital pen is operable.
	Flashing slowly (lit for 0.5 seconds, off for 5 seconds)	Battery is low. <ul style="list-style-type: none"> Replace the battery.
	Flashing quickly (lit for 0.2 seconds, off for 0.2 seconds)	An error has occurred. <ul style="list-style-type: none"> Put the cap back on, then try again.

NOTICE

The digital pen's power turns off automatically if the pen is not used for about 7 minutes with the cap off. To use it after this has happened, first put the cap onto the digital pen, then take it back off.

Troubleshooting

Digital pen problems

Condition	Check
Digital pen's indicator does not light/flash	<ul style="list-style-type: none"> • Is a battery inserted in the digital pen? • Is the battery worn out? • Is the battery inserted in the wrong direction (+ and – polarities)?
Digital pen's indicator flashes (lit for 0.5 seconds, off for 1 second)	<ul style="list-style-type: none"> • Connection to device or pairing with the digital pen has not yet been completed. Pair the digital pen and computer.
Digital pen is not recognized (pairing is not possible)	<ul style="list-style-type: none"> • Is the digital pen already paired with another computer? • Is the function turned off on the Bluetooth USB adapter or on the computer equipped with built-in Bluetooth function? • Is the battery worn out?
Digital pen has been recognized but pen does not write	<ul style="list-style-type: none"> • Is the digital pen being used at an angle of more than 45 degrees with respect to the panel surface? • Is there adhesive tape, etc., on the panel's surface? • Is the stylus worn out?
Writing is not possible with multiple digital pens simultaneously	<ul style="list-style-type: none"> • When using multiple digital pens, it is not possible to draw with the pens simultaneously. Wait until the other person has finished before writing.
Mouse right-click operation does not function when the digital pen is pressed and held	<ul style="list-style-type: none"> • Is "Turn click lock on" selected (checked) at "Mouse properties" on the computer? * "Mouse properties" is located at [Start] → [Control Panel] → [Printers and Other Hardware][†] → [Mouse]. † [Hardware and Sound] for Windows Vista.

Interactive panel problems

Condition	Check
It is hard to erase what you have drawn with the marker.	<ul style="list-style-type: none"> • Has the ink been left on the panel for an extended period of time? • Have you used a marker other than the exclusive markers? • Are you wiping the panel with thinner or benzene?
Interactive panel's adhesive strength is weak.	<ul style="list-style-type: none"> • For magnet type panels, use a dampened cloth to wipe any dirt or dust off the magnets on the backs of the holding bars and off the panel's back surface (the magnetic layer).

• Technical support

If the problem with the product or software cannot be solved, contact your nearest PLUS Corporation office, dealer or store.

Specifications

Model name	UPIC-56M		UPIC-64M	UPIC-W72M
Type of installation	Magnetic sheet type			
External dimensions	W1160 × D11.3 × H855 mm (W45.7 × D0.4 × H33.7 inches) *1	W1330 × D11.3 × H995 mm (W52.4 × D0.4 × H39.2 inches) *1	W1630 × D11.3 × H1070 mm (W64.2 × D0.4 × H42.1 inches) *1	
Weight (Not including pen or accessories)	Approx. 1.6 kg (3.5 lb)	Approx. 2.1 kg (4.6 lb)	Approx. 2.8 kg (6.2 lb)	
Panel				
Size	W1130 × H845 mm (W44.5 × H33.3 inches)	W1300 × H975 mm (W51.2 × H38.4 inches)	W1600 × H1050 mm (W63 × H41.3 inches)	
Reading system	Anoto pattern reading using Anoto pen*2 *3			
Digital pen*2 *3				
Model name*4	ADP-301 (Type name: DP-301)			
Power supply	AAA alkali battery × 1 (1.5V)			
Interface	Conforming to Bluetooth 2.0 class 2*5			
Main unit weight	Approx. 40 g (0.1 lb) (including battery)			
Operating time	During continuous drawing – Approx. 5 hours; In standby - Approx. 150 hours (with cap removed)			
Usage conditions				
Temperature	0°C to 40°C			
Humidity	30 to 85% (with no condensation)			
Functions				
Interactive modes	White screen mode, overlay screen mode, mouse mode Functions (pen colors (8 colors)/marker colors (8 colors)/eraser/pen, marker and eraser size selection/ insertion of pictures/deleting of page contents/screen mode selection/printing/file input/output)			
Whiteboard	Marker writing			
Included software operating environment				
Compatible operating systems	Windows XP (Service Pack 3 or later)/Windows Vista 32-bit version*6			
Compatible computer types	Preinstalled models operating on one of the operating systems above			
CPU	Pentium 4 processor or later			
Memory	512MB or greater			
Hard disk	200MB or greater			
Display resolution	1024 × 768 pixels or greater, High Color or greater			
Devices	Bluetooth adapter*7, standard computer USB port, CD-ROM drive			
Compatible Bluetooth stacks	Microsoft® Bluetooth® stack Broadcom's Widcomm® Bluetooth® software stack Toshiba Bluetooth® stack BlueSoleil Bluetooth® stack			

*1: Including maximum protruding parts.

*2: A computer and projector are required to draw with the digital pen.

*3: For details on operating principles, etc., see <http://www.anoto.com/>

*4: Model subject to change without notice.

*5: A separate Bluetooth adapter is required to connect to a computer not equipped with a built-in Bluetooth function.

*6: Providing the above operating environment does not guarantee that all operations will work.

*7: No Bluetooth USB adapter is included. For a list of recommended commercially available Bluetooth USB adapters, see the Products page on our website.

- Digital pens may be purchased separately as individual articles. For details, see our website. However, it is not possible to use multiple digital pens simultaneously.

PLUS Corporation

ISO 9001 certification. ISO 14001 certification.