

This is the stand assembly manual for the M-11 Series/C-11 Series.



### Warning

- Please be sure to perform the installation and assembly based on this manual. Incorrect installation or assembly will be the cause of injury.
- Please have 2 or more persons lift the Copyboard when installing or removing it.
- For details on installation, also refer to the copyboard's "User's Manual" and "Assembly and Setup Manual".

## STAND PACKAGING LIST

Please open the carton and check the parts.

In the rare event that something is missing, please contact your store of purchase.

T-shape legs (with casters) × 2, Hexagonal socket screws × 8, Flat washers × 8, Horizontal bars × 2, Hexagonal wrench × 1, Stay × 1, Nylon bushing × 1, M3×6 screws × 2, Stabilizers × 4, Frame caps × 2, Auxiliary caps × 4, Lock-screws × 2

## ASSEMBLY OF THE STAND

Use the same method to assemble the left and right sides of the stand.

**(1) Press-fit the frame cap onto the top of the T-shaped legs.**

**(2) Attach the stabilizers to the front and back of the T-shaped legs.**

Insert the stabilizers securely all the way in.

**(3) Lock the caster stoppers.**

Press the bottom portion of the stoppers to lock them.



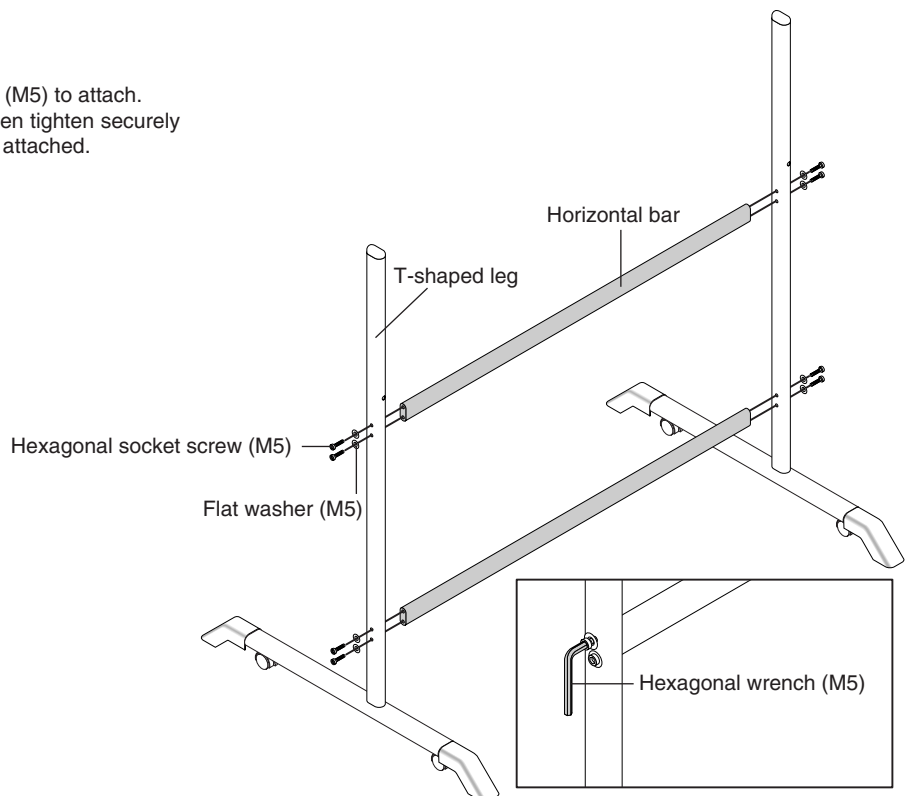
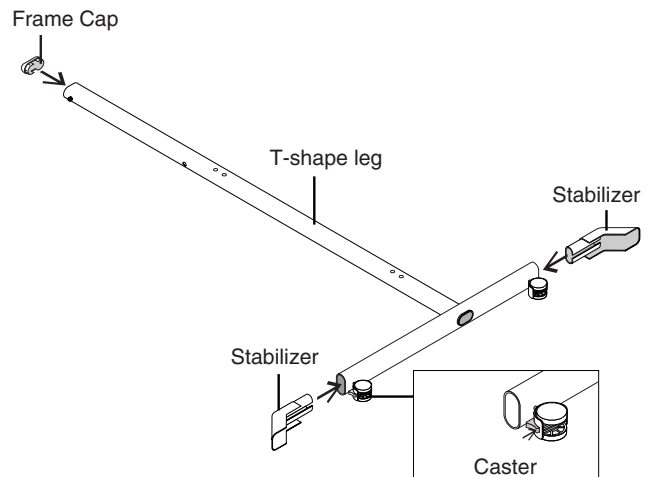
### CAUTION

To prevent toppling, be sure to install the stabilizers at each of the 4 locations. The toppling of this machine could cause bodily injury or damage the machine.

**(4) Attach the two horizontal bars to the T-shape legs.**

Use hexagonal socket screws (M5) and flat washers (M5) to attach.

Partially fasten using the hexagonal wrench (M5), then tighten securely after the upper and lower horizontal bars have been attached.



**(5) Place the stand's hooks in the mounting holes in the support fittings and insert the grooves in the hooks securely.**

There are 3 hole positions. By changing the position, the installation height can be changed among 3 levels in 100 mm units (1770, 1870, and 1970 mm (the maximum height)).



**CAUTION**

Please have 2 or more persons lift the Copyboard when installing it or making a height adjustment. If the unit is dropped or falls over, this could cause unforeseen injury.

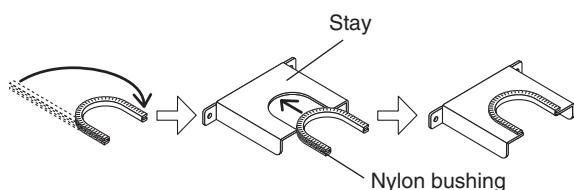
**(6) Mount the printer table to the Copyboard.**

See Page 9 for information about the assembly and installation of the printer table.

\* Installation of the printer table is not required when the Copyboard is used only for USB memory storage.

**(7) Install the stay to the printer table.**

- ① Insert the nylon bushing into the stay.



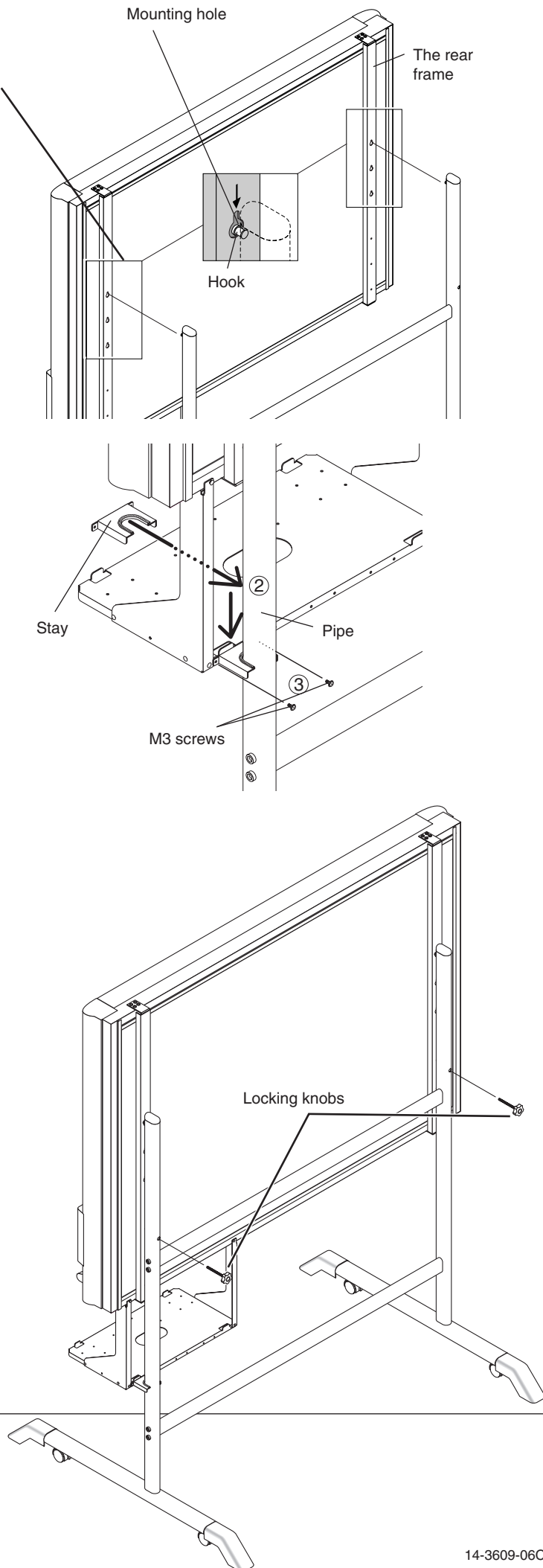
- ② Insert the stay into the pipe of the stand.

- ③ Mount the stay to the printer table using two M3 screws.

**Notice**

Check again that the grooves in the stand's hooks are securely inserted in the mounting holes in the support fittings.

**(8) Lock the main unit and stand with the two locking knobs.**



**PLUS Vision Corp.**

1033-1, Oshitate, Inagi-shi, Tokyo, 206-0811 JAPAN

www.plus-vision.com

email:plusvision@plus.co.jp