

PLUS

Clean Writing Pad Kaite



Thank you for your purchase of Clean Writing Pad Kaite.
Please read this manual carefully before using the product.

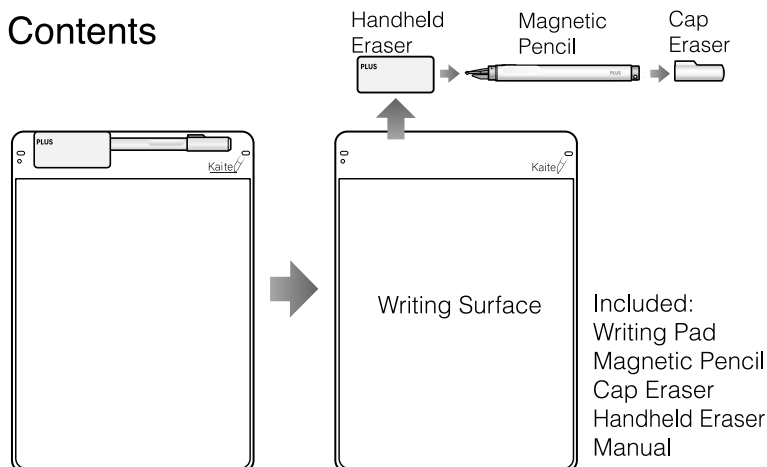
CAUTION

- Be sure to use the dedicated magnetic pencil and erasers that come with the product.
- When writing, do not apply too much pressure with the pencil, as it may damage the writing surface.
- Pencil tips and pad corners are sharp, avoid getting close to the eyes.
- The pad is magnetic. Do not place smartphones and tablets near the product to avoid the accidental erasing of information.
- PLUS is not responsible for the accidental loss of information.
- This product is not water resistant. Do not use in wet conditions.
- Avoid exposure to high temperatures, rapid temperature changes or direct sunlight.
- Operating conditions: 15°C~40°C/ 59°F~104°F
- Please refrain from using the product if you require medical equipment such as pacemakers, etc.
- This product is not intended for use by young children without supervision.

WARNING

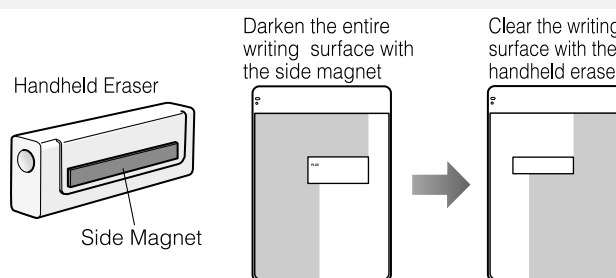
• CHOKING HAZARD – Small Parts Not for Children Under 3 years.

Contents

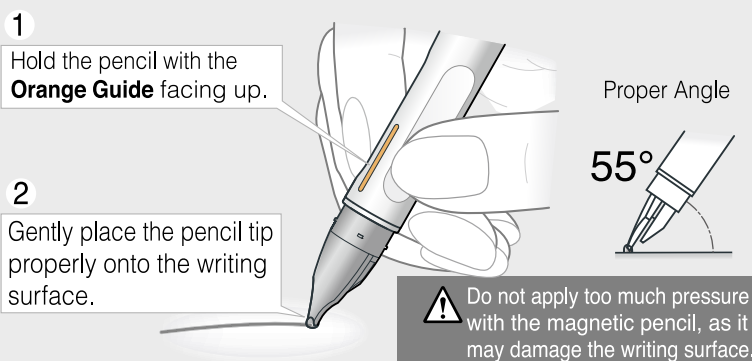
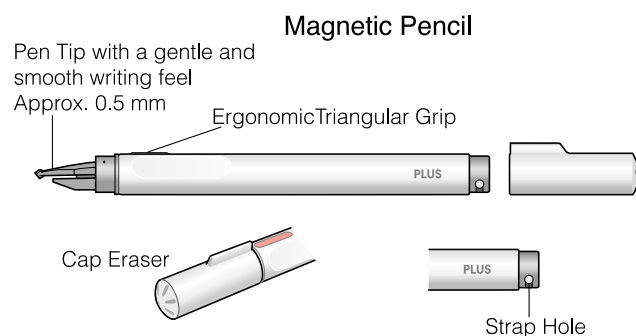


Optimizing the Writing Surface

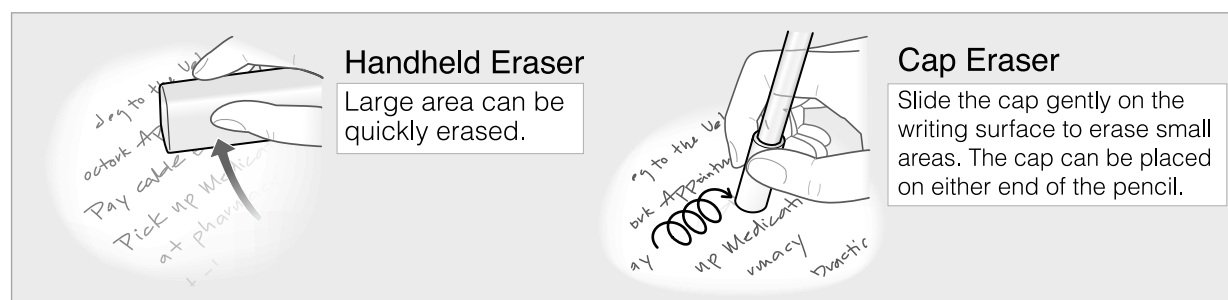
Before the first use, or after not using for a large amount of time, it is recommended to optimize the pad for better writing performance. This can be done by running the "Side Magnet" over the entire writing surface. The "Side Magnet" can be found on the Handheld Eraser.



How to Write



How to Erase



How to Save

Download the Kaite App to extend the use of the pad.



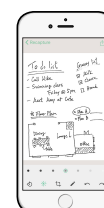
Kaite App

- Kaite App automatically detects the writing surface and optimizes the picture to fit to the screen.
- Picture Optimization will make the writing / drawings clearer.
- Gray scale mode can be selected when saving the drawings.

Search at Apple Store or Google Play **Kaite**



Auto-frame Detection



Contrast Enhancement



Save/Share

