

**PLUS** | Whiteboard

# Stylish Mobile Partition Whiteboard



Suitable for group learning, discussions and presentations



## Stand shape pursued for beauty and mobility

Best match for modern office furniture.  
Smart leg design does not interfere with your step and provides light weight, mobility and stability.



## Active Meeting Tool

This PLUS active meeting tool, Double-sided Partition Whiteboard that has large writable surfaces, will help to expand ideas.



## MTG Sync App Compatible

The notes on the whiteboard can be captured straightaway by the MTG Sync App and can be shared at once.

# PLUS | Stylish Mobile Partition Whiteboard



## Features



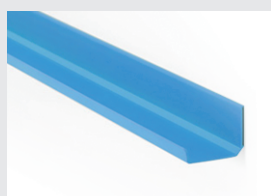
### Durable Casters

Easily transportation from area to area with four castors ( 4 lockable).



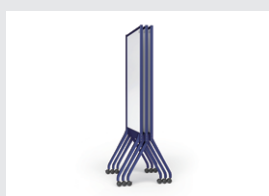
### Magnetic Surface

Magnets can be attached to the board surface.



### Removable Tray

Magnetic pen tray can be placed anywhere you like.



### Compact Storage

Nests easily for minimal space usage.



### Erasability

Painted steel surface resists ghosting and provides great erasability.



With this MTG Sync App, the notes on the whiteboard are saved clear in a portable size, easily organized and quickly shared!

Read the below QR code to access our MTG Sync web-site



## Specifications

Model	ALKB-S0912DSK-NV-EU	ALKB-S0912DSK-LG-EU
Frame Color	Navy Blue	Light Grey
Product size(mm)	W943 x D573 x H1800	
Writing surface(mm)	W876 x H1176	
Weight	10.9kg	
Material of surface	Steel	
Material of frame	Aluminum	
Material of tray	ABS	

© 2018 PLUS Corp. All rights reserved. Other trademarks and trade names may be used in this document to refer to either the entities claiming the marks and names or their products. Information in this document is subject to change without notice.